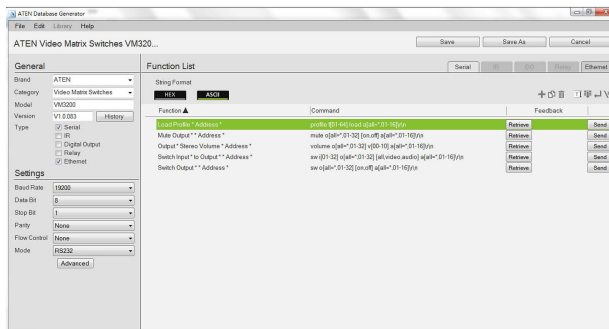


## Database Generator

ATEN Control System - Database Generator



Database Generator is a device management tool built in to the [VK6000](#) Configurator that assists users in creating device drivers and maintains a favorite device library for future convenience. It provides an intuitive interface with a variety of formulas that simplify complicated command code into easy rules that facilitates device driver creation and project configuration. In addition, the device drivers can be imported or exported with ease, allowing time-saving, coding-free device configuration with no extra effort.

### Features

- Built-in 10,000+ device drivers include ATEN products
- Creates device drivers in different control interfaces, including Serial, IR, DO, Relay, and Ethernet
- IR learning function for adding IR device drivers
- Built-in default template for IR device
- Supports a variety of formulas that simplify complicated command codes
- Supports real time command testing
- Allows TCP, UDP, Telnet, HTTP, HTTPS and WebSocket driver creation
- Supports Quick Mode for IR grouping test
- Flexible device driver import and export
- Enables user to edit the feedback processing of the device in LUA scripts and save it to a database for use in [VK6000](#) configurator

### ATEN International Co., Ltd.

3F., No.125, Sec. 2, Datong Rd., Sijhih District., New Taipei City 221, Taiwan  
 Phone: 886-2-8692-6789 Fax: 886-2-8692-6767  
[www.aten.com](http://www.aten.com) E-mail: [marketing@aten.com](mailto:marketing@aten.com)



© Copyright 2015 ATEN® International Co., Ltd.  
 ATEN and the ATEN logo are trademarks of ATEN International Co., Ltd.  
 All rights reserved. All other trademarks are the property of their respective owners.